

## Clever Portal Single Sign-On for Students

Using Badges to Sign In to Clever on Your iPad

### Logging into the Clever Portal Using Badges

Students in grades K-1 who are assigned a district iPad will have two options for logging into the **Clever Portal**. They can log into the **Clever Portal** using their username and ESD student password, or they can scan their **Clever Badge**. **Clever Badges** allow students to hold up a physical badge to their device's webcam to get logged in, instead of typing in usernames and passwords.

#### Using the Clever Badge to Login to Clever:

From the **Clever Login** page:

1. Click on **Login with Clever Badges**.
2. A message will appear stating that **"clever.com" Would like to Access the Camera**. Click **Allow**.
3. The webcam will activate so the student can hold up their **Badge** up to the camera. Once the sensors recognize the code, the screen border will flash green.
4. The students will then automatically be redirected to their **Clever Portal**.

#### Erie City School District

[Not your district?](#)

#### Login information

|          |                      |
|----------|----------------------|
| USERNAME |                      |
| PASSWORD | <a href="#">Show</a> |


Log in

Having trouble?

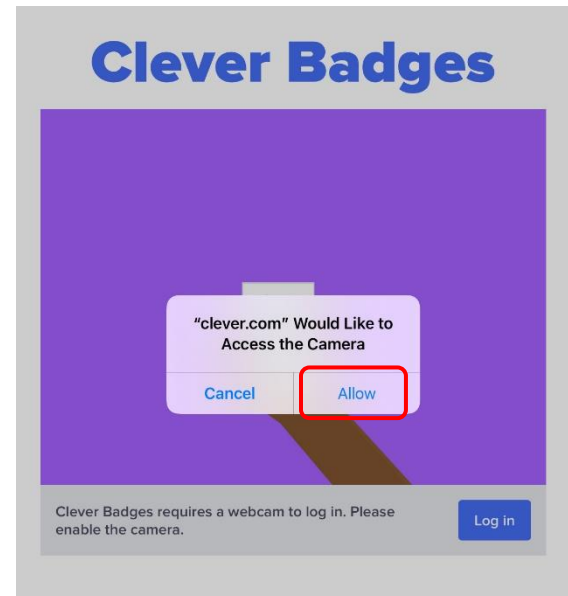
Contact [patross@erieds.org](mailto:patross@erieds.org)

Or [get help logging in](#)

OR

|   |                           |
|---|---------------------------|
|  | Log in with Clever Badges |
|---|---------------------------|

[District admin log in](#)

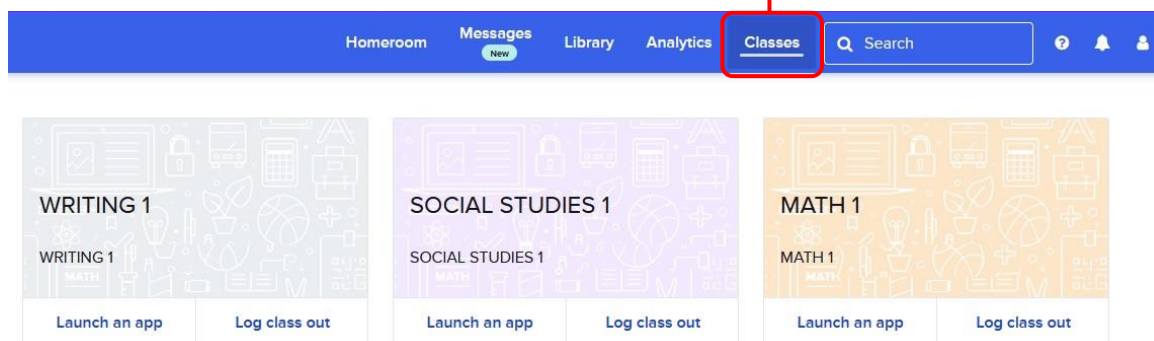


## Downloading & Printing a Class Set of Student Badges

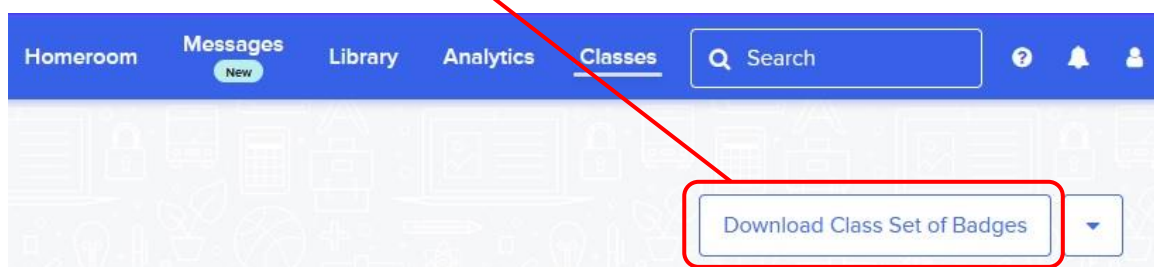
### Downloading a Class Set of Student Badges:

To download a class set of **Clever Badges**:

1. From the menu bar at the top of the screen, click on **Classes**.



2. Select the class in which you want to print a set of student badges.
3. Click on the **Download Class Set of Badges** link from the top right-hand corner of the screen.

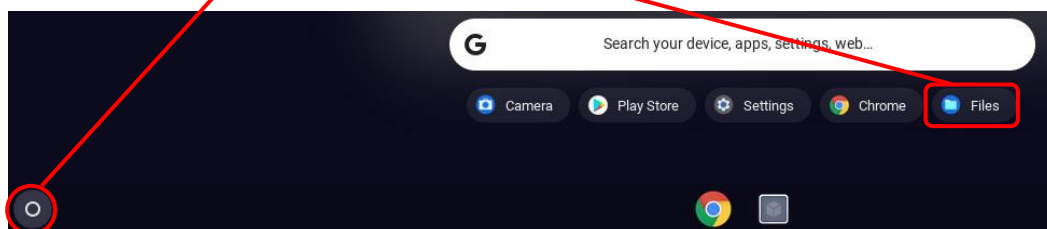



4. A message will appear stating that you have **Successfully downloaded badges** for the selected class.
5. Repeat the download process for all of your classes.

### Printing a Class Set of Student Badges:

To print the class sets of student badges:

1. Click on the **Launcher**, and then click on **Files**.



2. Click on **Downloads**.
3. Double-click on the file you want to open.
4. Click on the **Print**  icon from the upper right-hand corner of the screen.

## IT Support

### **Logging into the Clever Portal Using Badges:**

If you cannot login to the **Clever Portal** using the above steps, please send a support request to [epssupport@eriesd.org](mailto:epssupport@eriesd.org).